

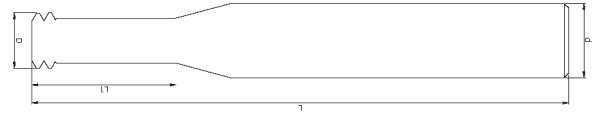


MG

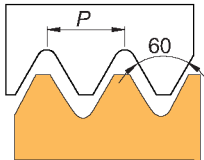
HG  
Coating

### Specialty

- \*New design, fine grinding;
- \*Optimal bar material, excellent performance.



The shank taper angle shown is not an exact value and to avoid contact with the workpiece, we recommend the user controls the precise value of this angle. Shank taper angle should not make contact with the workpiece.



### Metric Coarse Thread

Model Number	P Tooth Pitch	D Diameter of Cut	L1 Effective Length	d Shank Diameter	L Overall Length	T Number Of Flutes	Type	In Stock
HRC70 Superhard Thread Milling Cutter M1.6*0.35	0.35	D1.2	3.2	6	50	3	2 Tooth	○
HRC70 Superhard Thread Milling Cutter M2.0*0.4	0.4	D1.55	4	6	50	4	2 Tooth	○
HRC70 Superhard Thread Milling Cutter M2.5*0.45	0.45	D1.96	5	6	50	4	2 Tooth	○
HRC70 Superhard Thread Milling Cutter M3*0.5	0.5	D2.4	6	6	50	4	2 Tooth	○
HRC70 Superhard Thread Milling Cutter M4*0.7	0.7	D3.15	8	6	50	4	2 Tooth	○
HRC70 Superhard Thread Milling Cutter M5*0.8	0.8	D4.05	10	6	50	4	2 Tooth	○
HRC70 Superhard Thread Milling Cutter M6*1.0	1	D4.8	12	6	50	5	2 Tooth	○
HRC70 Superhard Thread Milling Cutter M8*1.25	1.25	D6.5	16	8	60	6	2 Tooth	○
HRC70 Superhard Thread Milling Cutter M10*1.5	1.5	D8.2	20	10	75	6	2 Tooth	○
HRC70 Superhard Thread Milling Cutter M12*1.75	1.75	D9.9	24	10	75	6	2 Tooth	○

○ Standard in stock

\*Contact customer service to confirm and place an order

○

○